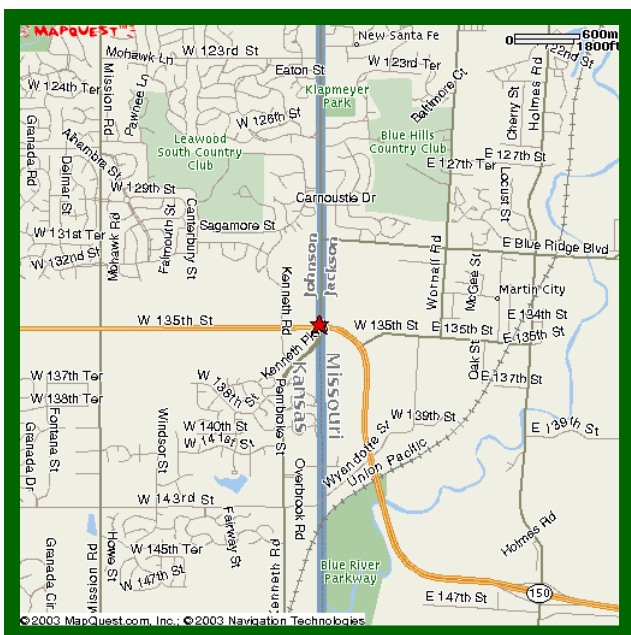


SHOPPING CENTER PAD SITES AND ANCHOR SPACE AVAILABLE

SWC 135th & Kenneth Road /
State Line Road
Leawood, Kansas

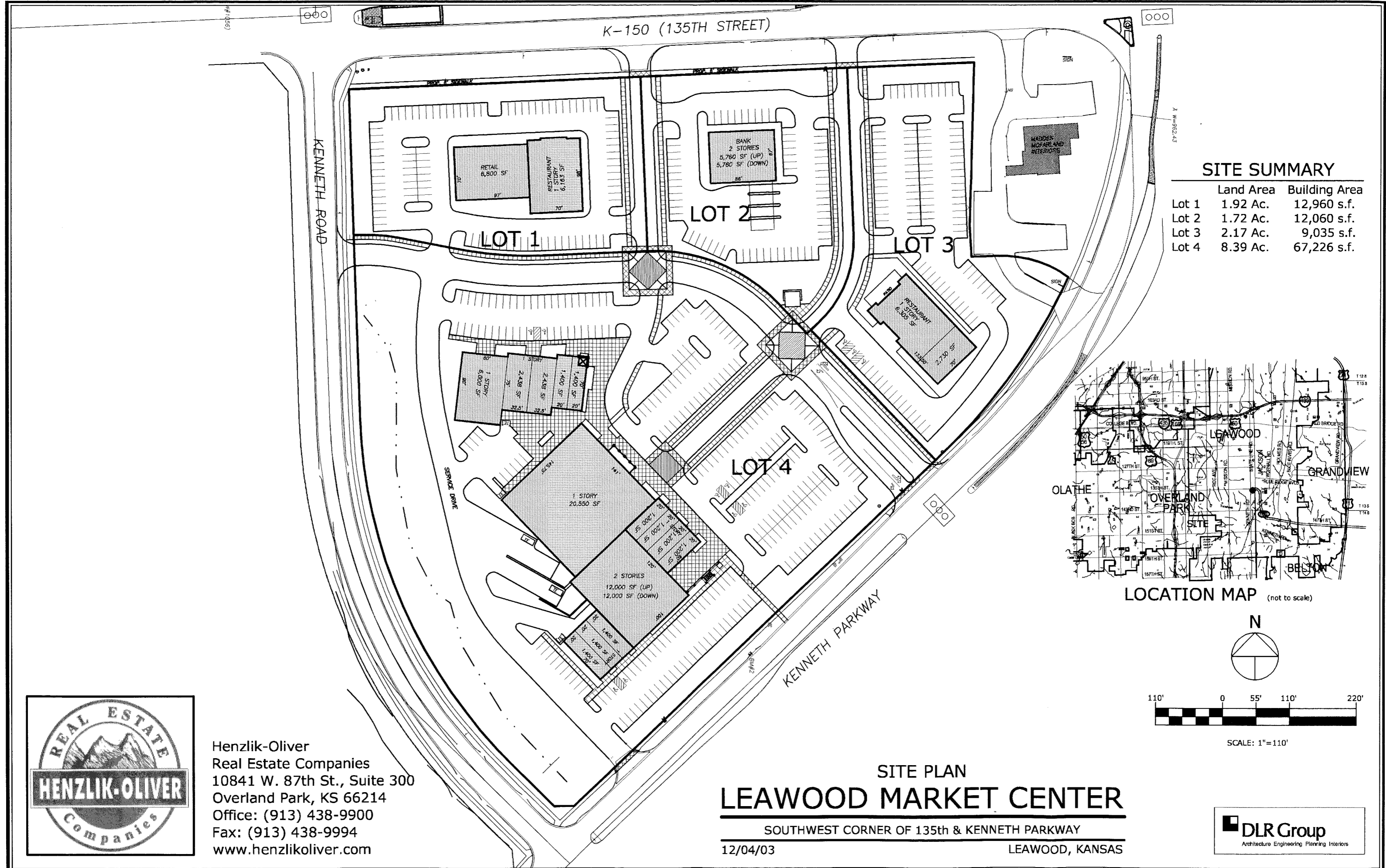


HIGH GROWTH AREA

- 3-MILE POPULATION – 40,982
- 3-MILE MEDIUM HH INCOME – \$93,244
- HIGH PROFILE / HIGH TRAFFIC COUNTS
- EXCELLENT VISIBILITY
- 3 STOP LIGHTS IN FRONT OF SITE
- ZONED CP-2

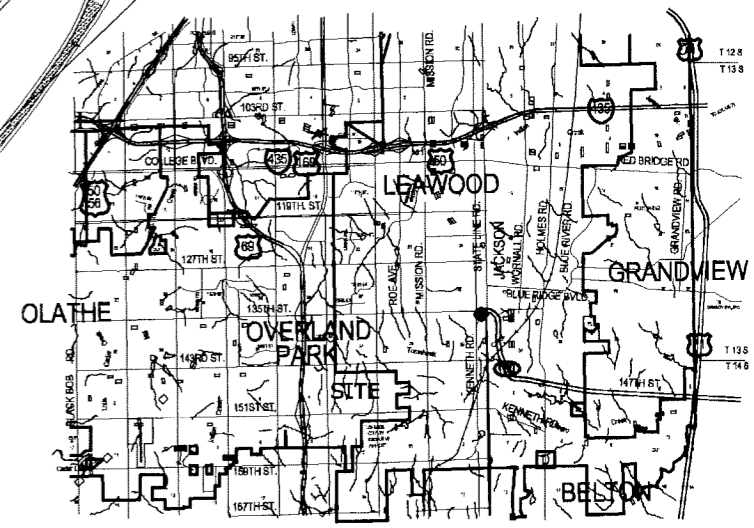


HENZLIK-OLIVER REAL ESTATE COMPANIES, LLC
10841 WEST 87TH STREET – SUITE 300
OVERLAND PARK, KANSAS 66214
TELEPHONE (913) 438-9900
FACSIMILE (913) 438-9994
WWW.HENZLIKOLIVER.COM

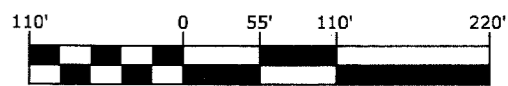
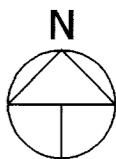


SITE SUMMARY

	Land Area	Building Area
Lot 1	1.92 Ac.	12,960 s.f.
Lot 2	1.72 Ac.	12,060 s.f.
Lot 3	2.17 Ac.	9,035 s.f.
Lot 4	8.39 Ac.	67,226 s.f.



LOCATION MAP (not to scale)



SCALE: 1"=110'



Henzlik-Oliver
 Real Estate Companies
 10841 W. 87th St., Suite 300
 Overland Park, KS 66214
 Office: (913) 438-9900
 Fax: (913) 438-9994
 www.henzlikoliver.com

SITE PLAN
LEAWOOD MARKET CENTER

SOUTHWEST CORNER OF 135th & KENNETH PARKWAY

12/04/03

LEAWOOD, KANSAS



View of Retail Center from 135th St. & Kenneth Pkwy.



Developed By:
Henzlik-Oliver Real Estate Companies, LLC
10841 W. 87th St. Suite 300
Overland Park, Kansas 66214
913-438-9900

Leawood Market Center

LEAWOOD, KANSAS

 DLR Group

Aerial View of Retail Center



Developed By:
Henzlik-Oliver Real Estate Companies, LLC
10841 W. 87th St. Suite 300
Overland Park, Kansas 66214
913-438-9900

Leawood Market Center

LEAWOOD, KANSAS

