

# SAN ANGELO, TEXAS

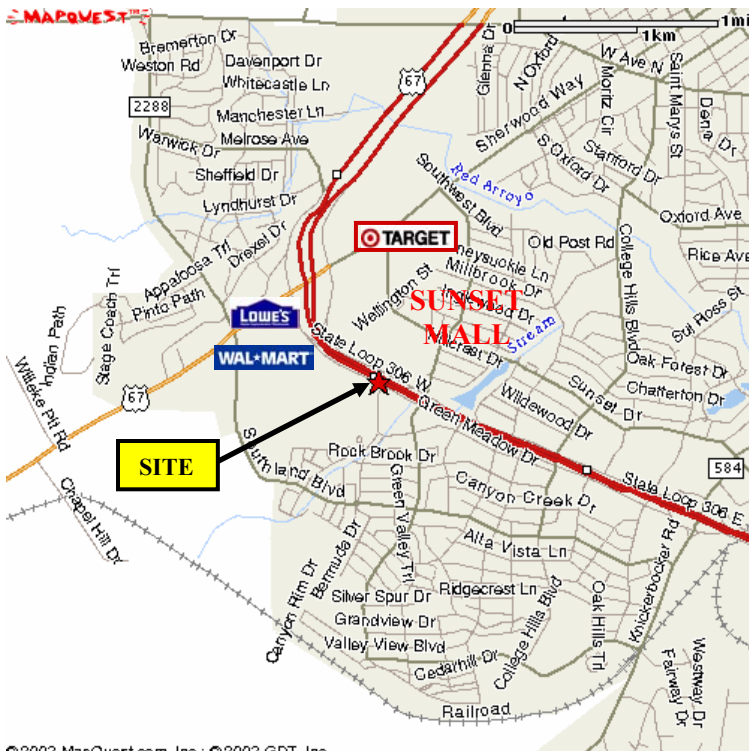
## LOOP 306 AND SOUTHWEST BOULEVARD



HENZLIK-OLIVER REAL ESTATE COMPANIES, LLC  
13356 METCALF AVENUE  
OVERLAND PARK, KANSAS 66213  
TELEPHONE (913) 438-9900  
FACSIMILE (913) 438-9994  
[WWW.HENZLIKOLIVER.COM](http://WWW.HENZLIKOLIVER.COM)

# SAN ANGELO, TEXAS

# LOOP 306 AND SOUTHWEST BOULEVARD

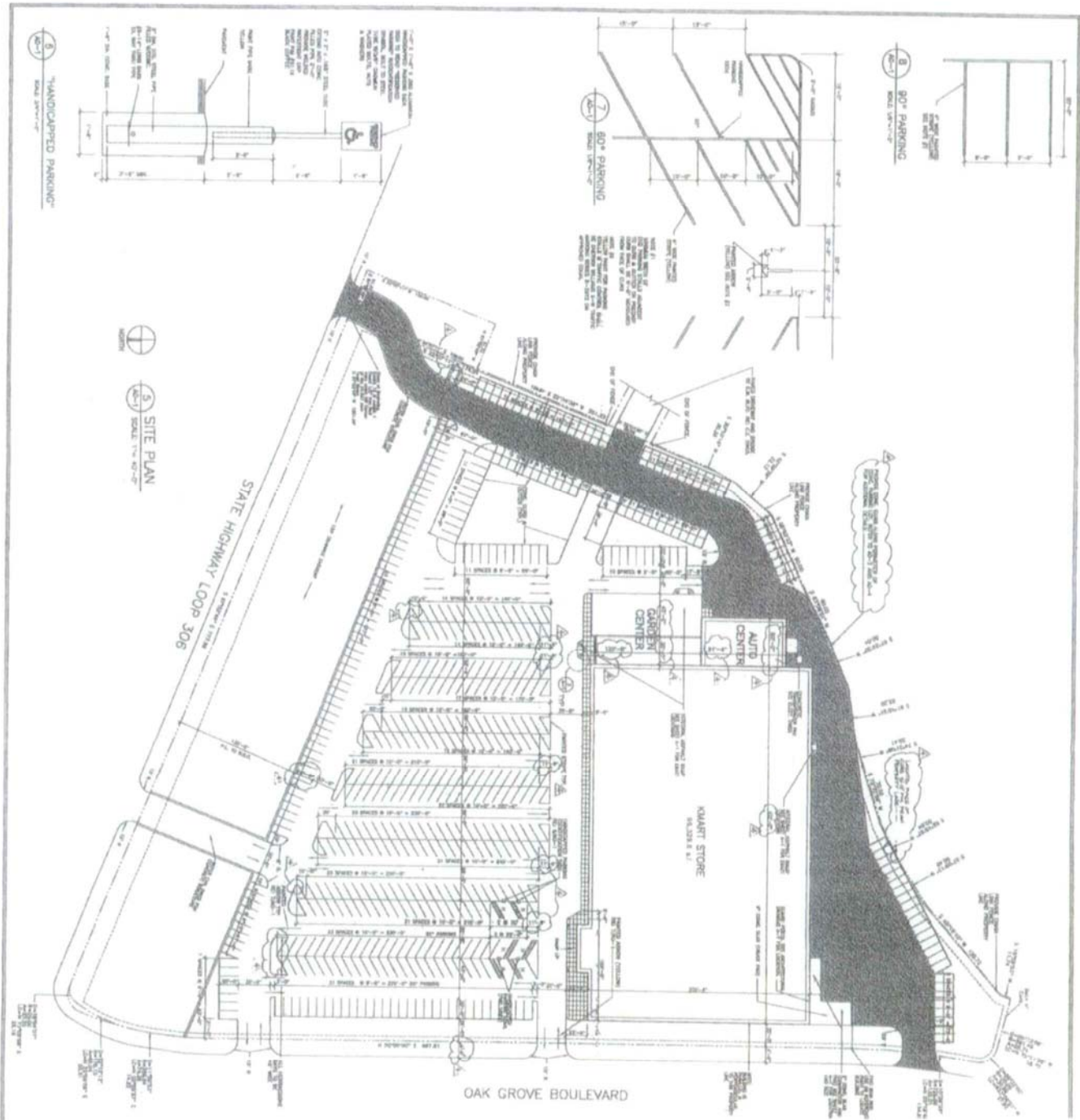


## FOR LEASE/SALE

- 99,296 SF – ACROSS FROM REGIONAL MALL
- 10-YEAR OLD BUILDING – FORMER KMART
- DIRECT ACCESS FROM LOOP 306
- CITY POPULATION – 88,474
- COUNTY POPULATION – 104,010



HENZLIK-OLIVER REAL ESTATE COMPANIES, LLC  
 13356 METCALF AVENUE  
 OVERLAND PARK, KANSAS 66213  
 TELEPHONE (913) 438-9900  
 FACSIMILE (913) 438-9994  
 WWW.HENZLIKOLIVER.COM



**San Angelo, TX**  
 Loop 306 at Southwest Blvd

**For Lease**

**Building - 99,296 SF**

**Land - 8.7 acres**

**Year Built - 1993**



HENZLIK-OLIVER REAL ESTATE COMPANIES, LLC  
 13356 METCALF AVENUE  
 OVERLAND PARK, KS 66213  
 TELEPHONE (913) 438-9900  
 FACSIMILE (913) 438-9994  
 WWW.HENZLIKOLIVER.COM